



The Solution That Gives Officers the Location of Offenders *and* Victims

It's an all too familiar scenario for law enforcement: domestic violence offenders are released and immediately return to abuse their victims. Protection orders are issued, but the offender may still spend too much time in locations close to the victim, and officers need to know when this is happening.

The Omnilink Domestic Violence Monitoring Solution

Omnalink's domestic violence monitoring solution gives officers the ability to monitor an offender's movements in relation to those of his or her victim. With a combination of our one-piece offender monitoring device, a small device the victim carries and our unique mobile exclusion zones monitoring technology, officers can monitor the proximity of offenders to their victims. The locations of the offender and the victim are recorded—historical data that gives officers insight into whether an offender is spending too much time in the vicinity of a victim.

Further, if an offender gets too close to a victim's house, place of work and/or other location, or gets too close to the victim's mobile exclusion zone when s/he is away from home, officers and the victim can be notified.



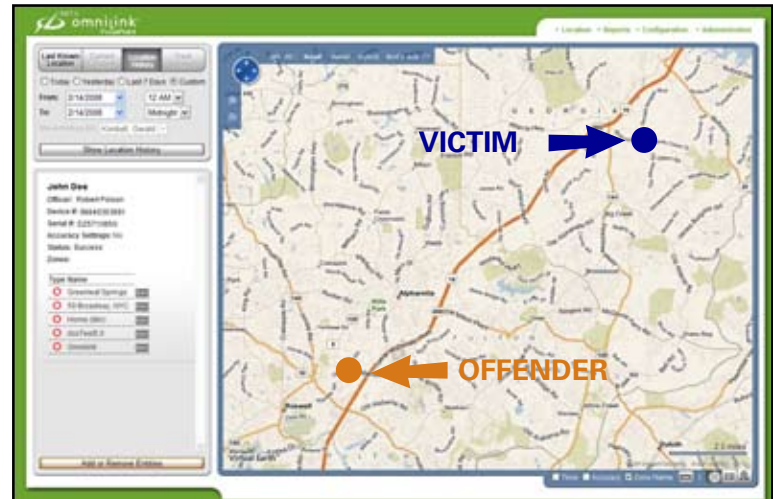
- Mobile exclusion zones correspond to the location of the offender's monitoring device and the device carried by the victim.
- Officers can analyze historical data to identify offenders who are in the vicinity of their victims too often.
- Law enforcement and the victim can be notified when the offender enters the victim's zone.
- Dual GPS and cellular technology can track outdoors and indoors.



Why Omnilink?

Simply put, it's time for a new approach to dealing with the cycle of domestic violence. And that's what Omnilink's domestic violence solution is all about. Finally, officers have the information to know if offenders are spending too much time in the vicinity of their victims.

- **Technology tracks outdoors and indoors**— Cellular technology can be automatically activated when GPS signals are lost.
- **Surveillance no longer depends upon incarceration** — Offenders can be monitored even when out of jail.



Omnalink FocalPoint



Omnalink's mobile exclusion zones technology monitors the location of offenders and their victims, and notifies victims and law enforcement if offenders get too close.

- **Flexible according to court sentence** — Multiple levels of monitoring, including high intensity, low intensity, and house arrest.
- **Reduced equipment loss** — Single-unit, 100% waterproof device eliminates need to frequently replace lost parts and hardware.